



HARBORVIEW
FARMS

Life on the Front Line:

A Farmer's Perspective



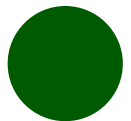
Who am I?

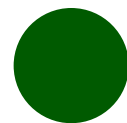
&

What is Harborview
Farms?

TREY HILL

- 4th generation Eastern Shore farmer
- Environmental Steward
- Keynote Speaker
 - NAS, Planet Forward, DuPont
 - African & South African Ambassadors
- Family
 - Cheryl, Taylor & Clay





HARBORVIEW FARMS





- Crops:

- Corn
- Soybean
- Wheat

- Seed:

- Pioneer

- Chemicals:

- Syngenta
- DuPont
- BASF



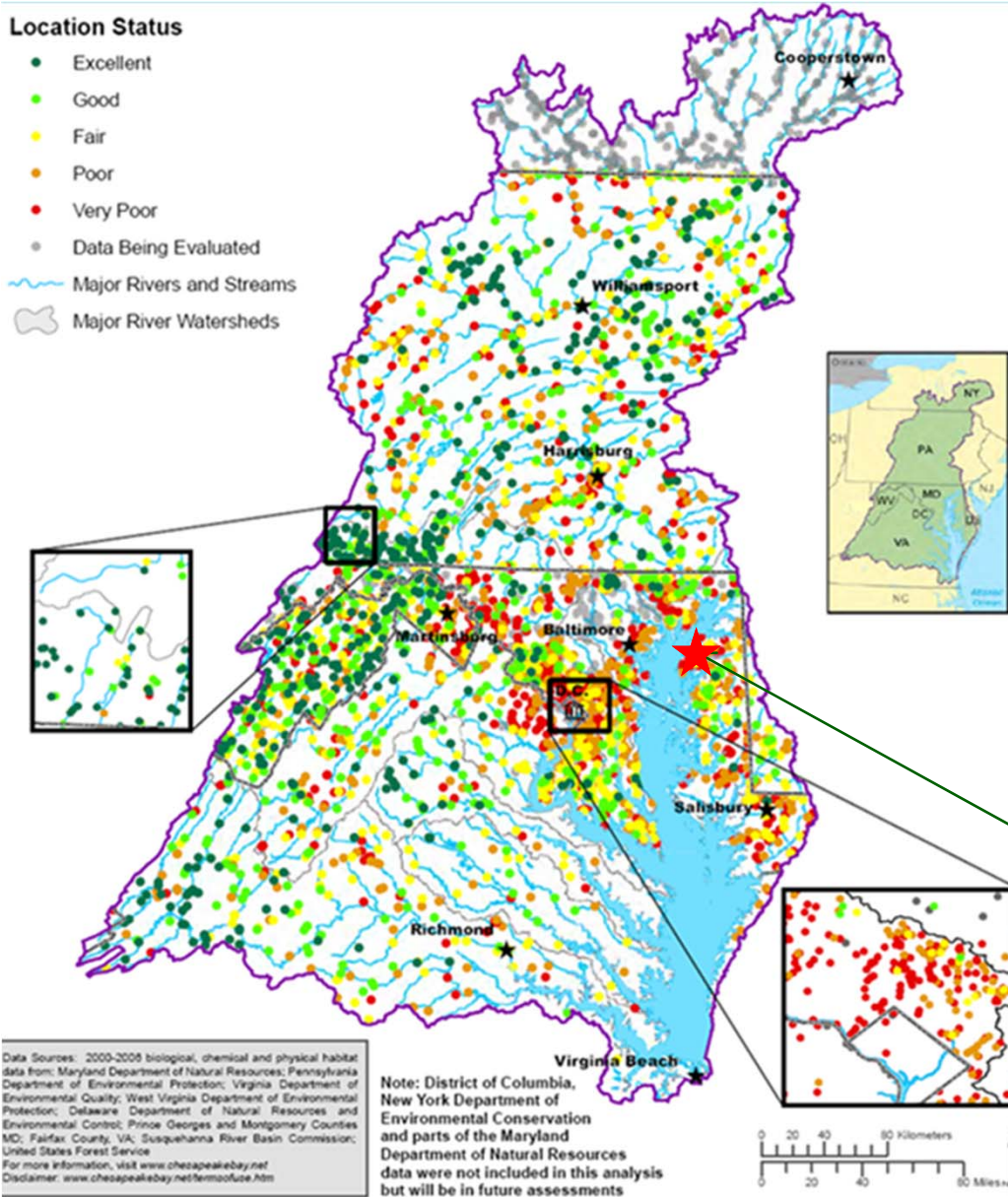
The left side of the slide features a decorative graphic. It consists of several vertical bars of varying widths and patterns, including a fine grid and solid colors. To the right of these bars is a cluster of five solid green circles of different sizes, arranged in a roughly circular pattern.

Why am I here?

Stream Conditions

Location Status

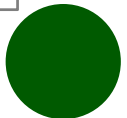
- Excellent
- Good
- Fair
- Poor
- Very Poor
- Data Being Evaluated
- Major Rivers and Streams
- Major River Watersheds



Chesapeake Bay Watershed

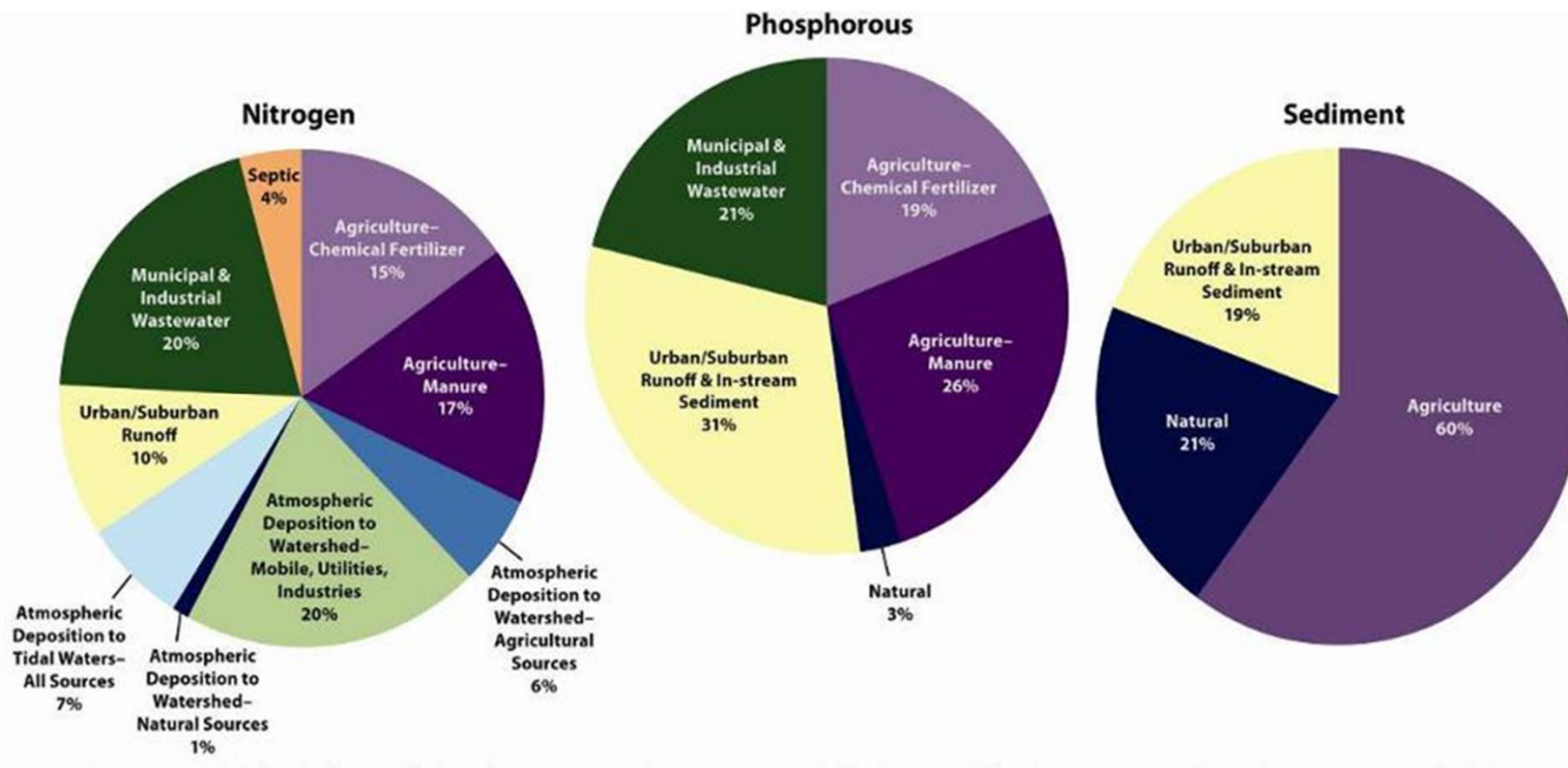
- North America's Largest Estuary
- 200 miles north to south
- 11,600 miles of shoreline
- 64,000 square miles
- Six states, DE, MD, NY, PA, VA, & WV plus DC
- 17 million people

Harborview Farms



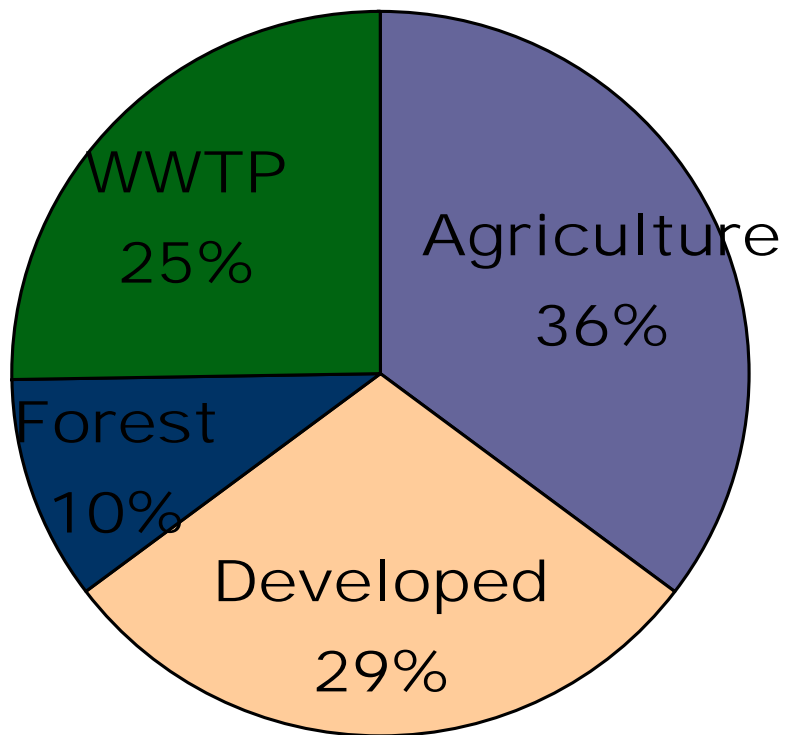
Main Sources of Bay Pollution

- Agriculture: animal manure, commercial fertilizer
 - Urban/suburban runoff - a growing problem
 - Air pollution: tailpipe, power plants
- Wastewater: sewage treatment plants

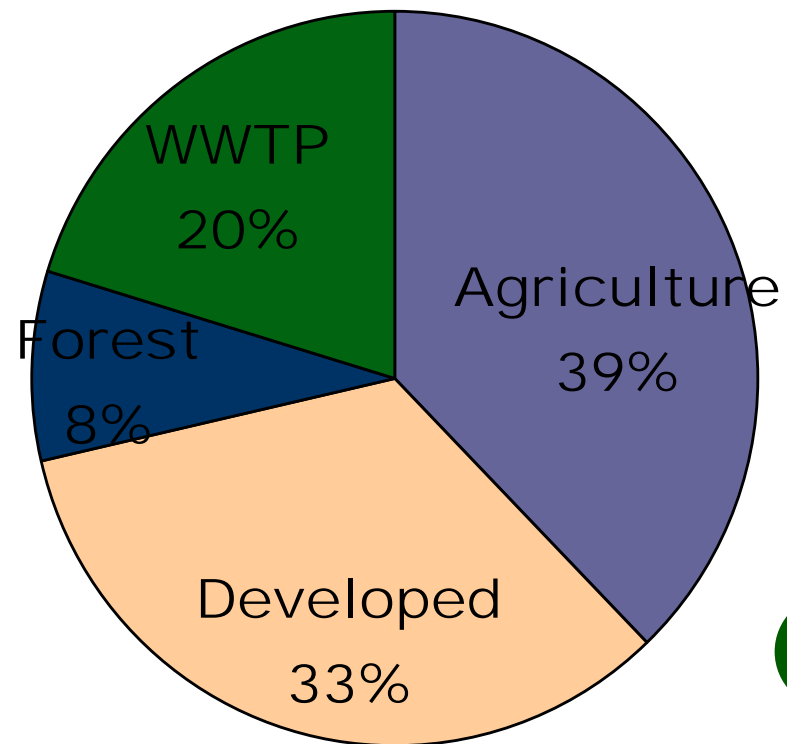


Nutrient Sources for Maryland

Sources of Nitrogen from Maryland



Sources of Phosphorus From Maryland



**Maryland
Nutrient Management Plan**

Prepared for:

Harbor View Farms, Inc.
5380 Eastern Neck Road
Rock Hall, MD 21661

April 7, 2008

Prepared by:

Jessica L. Inhof, CCA
MD Certification Number-1513
MD License Number-2175

Plan Type: Updated

NMP - Grain

Plan Period: 2008 Growing Season



NUTRIENT MANAGEMENT REGULATIONS

(MANDATORY)

- Nutrient management Plan
 - no fall or winter application
 - annual mandatory soil tests
 - random state audits or record keeping/logs
 - strict manure laws
 - Poultry industry



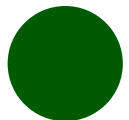
GREEN INITIATIVE AT HARBORVIEW

- solar panels
- upgraded dryer & chemical facility
- crop sensors



GREEN INITIATIVE AT HARBORVIEW (CON'T)

- recordation of maps
- split nitrogen application
- variable rate of phosphorous & nitrogen
- precise soil sampling
- boom shutoff & steering adoption of new chemicals & GMO seed
- experimentation of polymer coated fertilizers



NUTRIENT MANAGEMENT: “INNOVATIVE STEWARDSHIP PRACTICES” (VOLUNTARY)

4% out of production

- CREP
- CRP
- Privately Funded Buffers
- Cover Crops (80%)





WHO HARBORVIEW WORKS WITH TO ASSIST IN POLLUTION REDUCTION

○ **Chester River Association**

- Ag outreach
- Switchgrass Planting
 - Chicken bedding

○ **Chesapeake Bay Foundation**

- Board visits to the Farm
- Cover crop funding

○ **Sassafras River Association**

- Board member

○ **George Washington University**

- “Planet Forward”

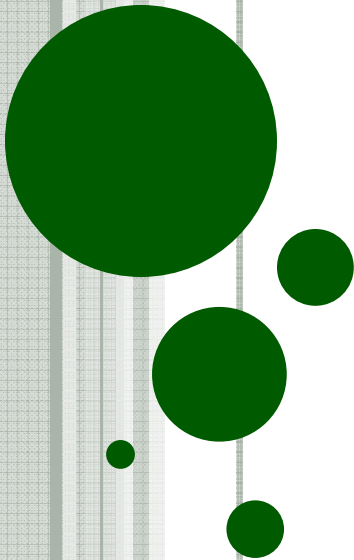


WHERE HARBORVIEW IS GOING FROM HERE

- Drones
- Personal “Total Maximum daily Load”
- Cloud based electronics



Why Do I Farm?



HARBORVIEW'S MISSION

- Public Relations
 - Landowners
 - General public
- Growth
 - profit
- Ag as a whole



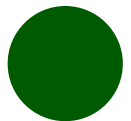
CULTIVATING THE FUTURE

- Social media
- Ag education
- Raising awareness
 - Healthy Habits
- Colchester Farms CSA



WHY WE NEED YOUR HELP...

- innovation
- technology
- overall growth capacity in conjunction with better nutrient control





QUESTIONS?