



Inland Waterways Infrastructure

TRACY ZEA

VICE PRESIDENT,
GOVERNMENT RELATIONS

WATERWAYS COUNCIL, INC.



Who Is Waterways Council, Inc.?

- Waterways Council, Inc. (WCI) advocates for a modern, efficient, reliable inland waterways transportation system
 - Operators
 - Shippers
 - Labor Organizations
 - Environmental Groups

Inland Waterways System

- 45/333#P lhv#ri#Q dyljdech#
Z dwhuz d|v
- 56<#Orfnv#dw#4<6#V lhv
- Fxuhqw#Dyj 1#Djh#ri#Orfn#lv#
8<16#|hduv#røg

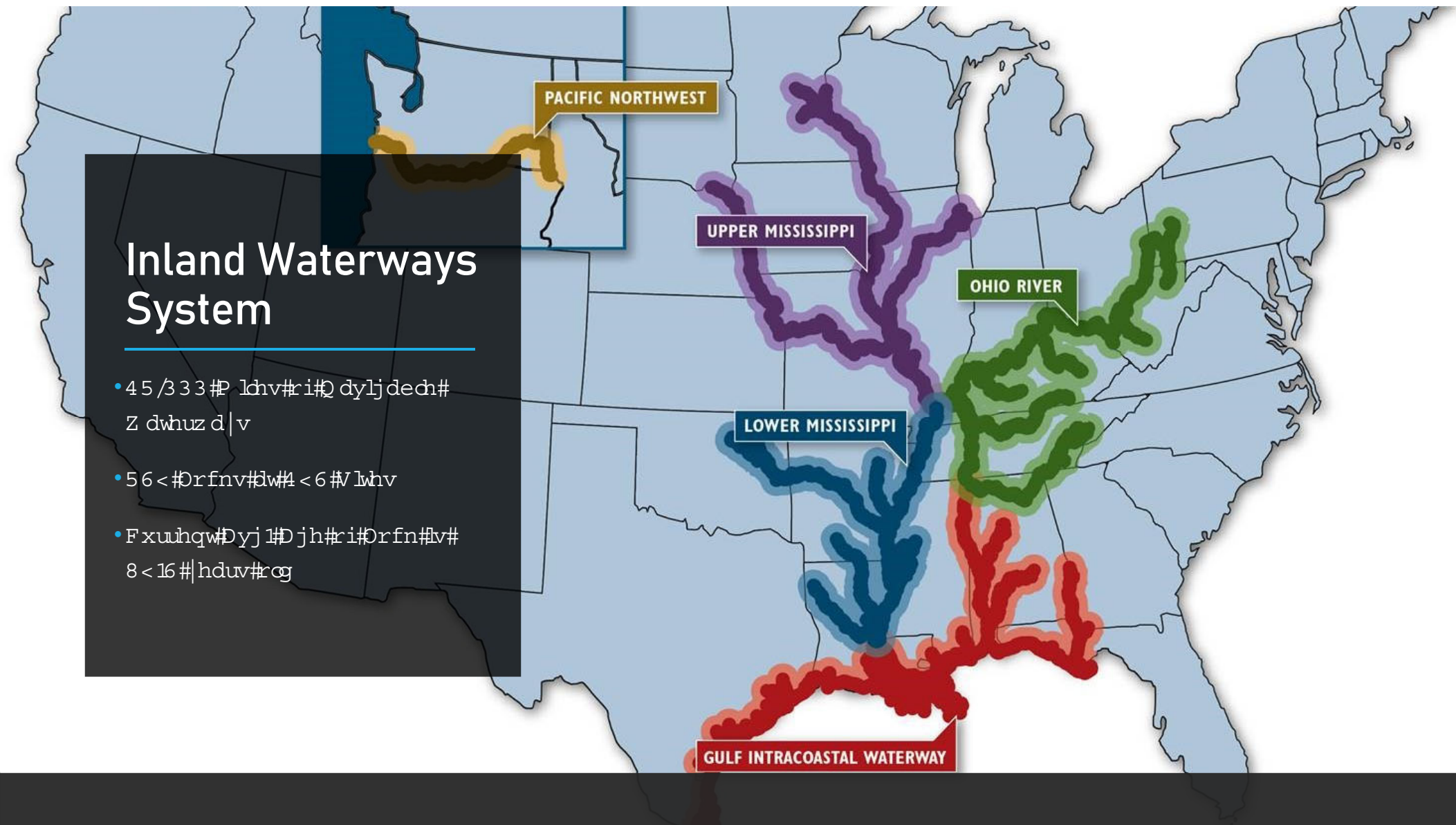
PACIFIC NORTHWEST

UPPER MISSISSIPPI

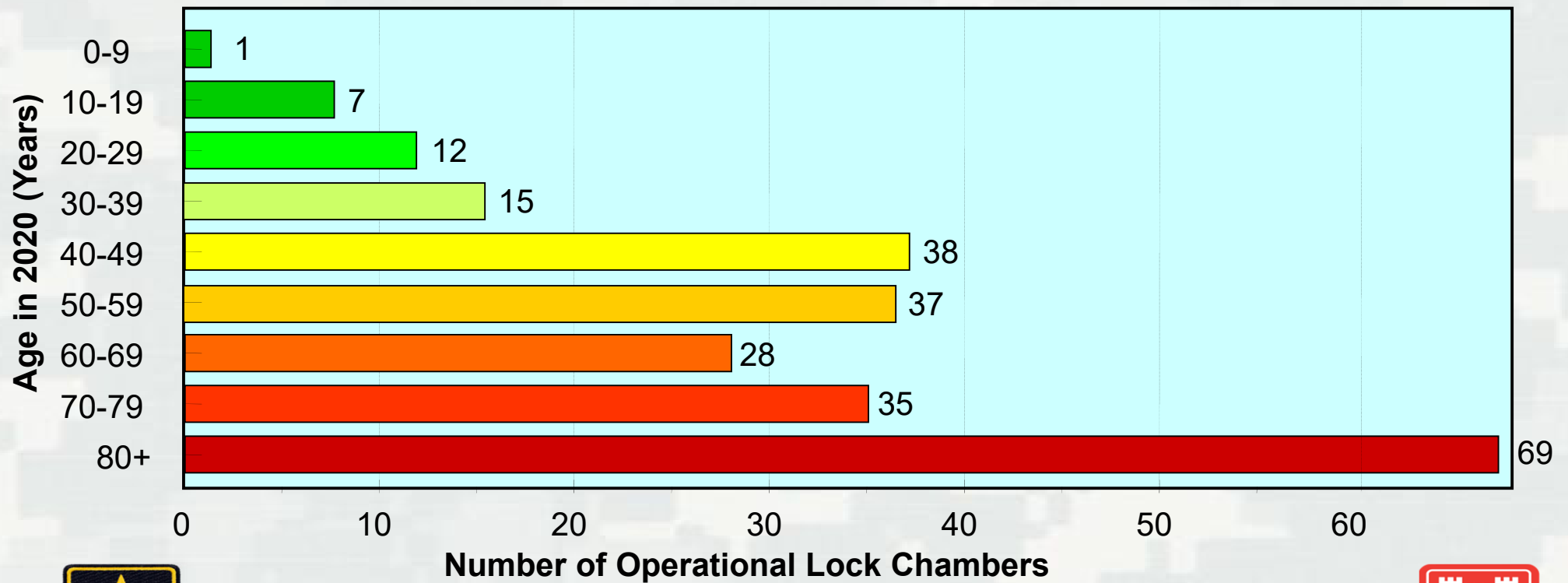
OHIO RIVER

LOWER MISSISSIPPI

GULF INTRACOASTAL WATERWAY



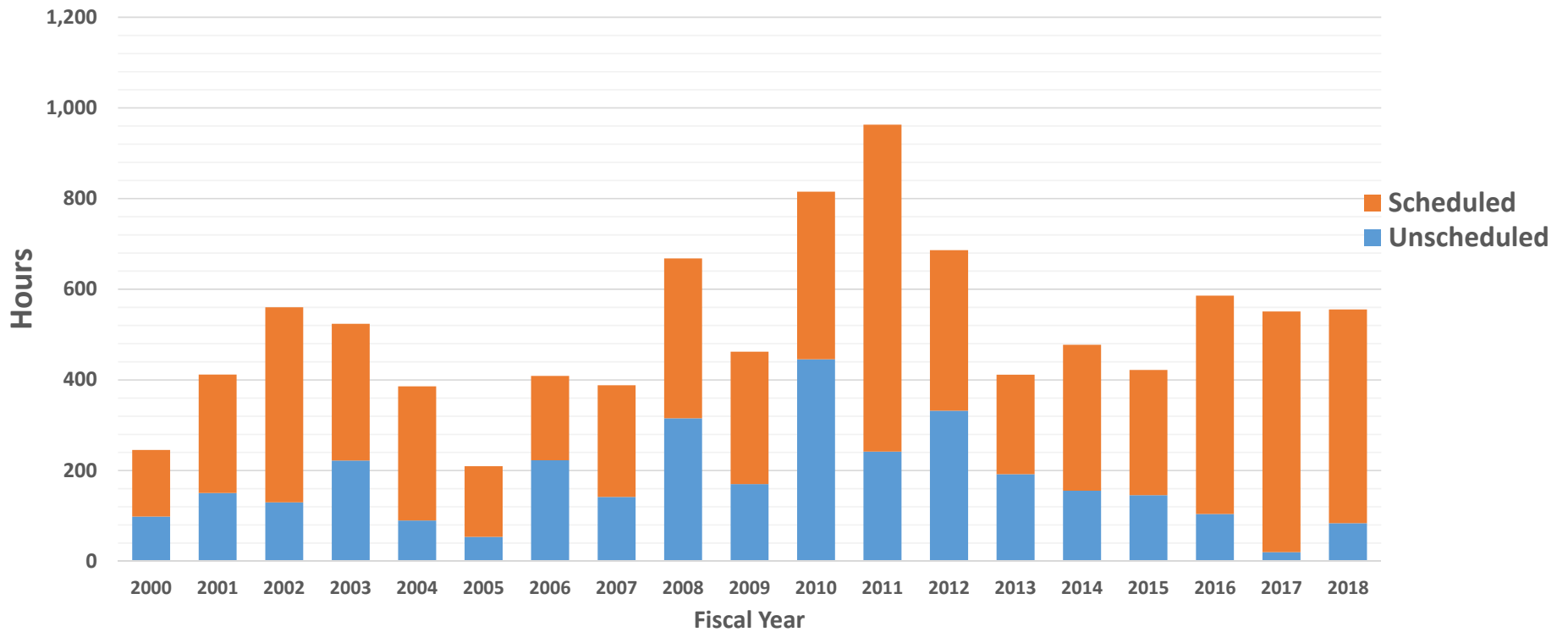
Age of Corps Lock Portfolio in 2020



*Includes All Operational Deep and Shallow Draft Corps and TVA Navigation Locks and Control Structures.

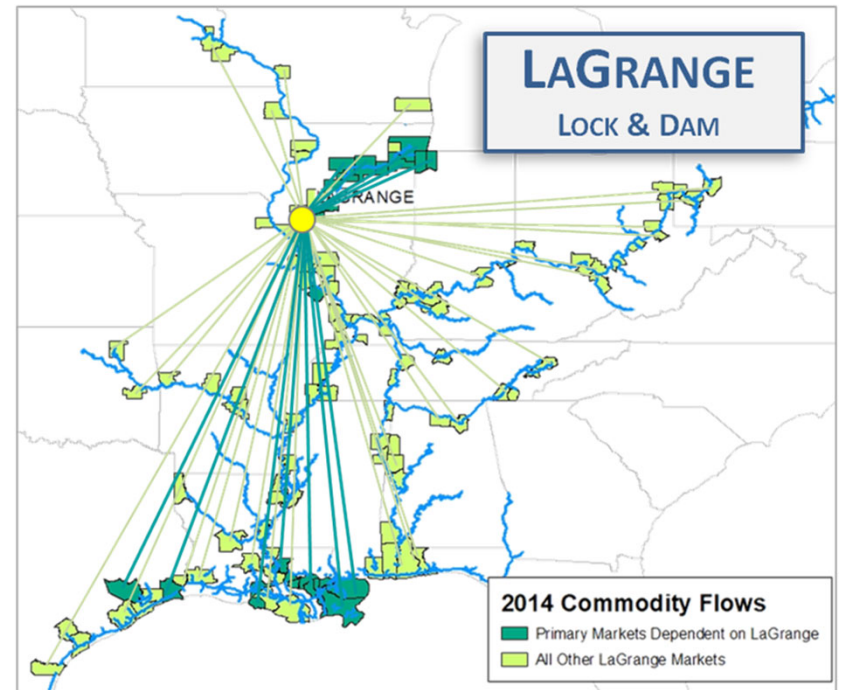
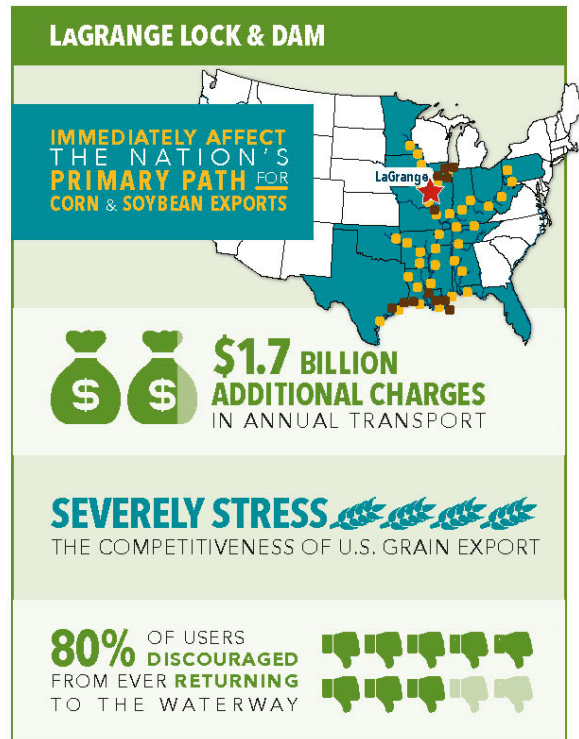


BUILDING STRONG®



*National Lock Portfolio Service Trends
Main Chamber Mechanical Unavailable Hours
(Events Longer than 1 Day)*

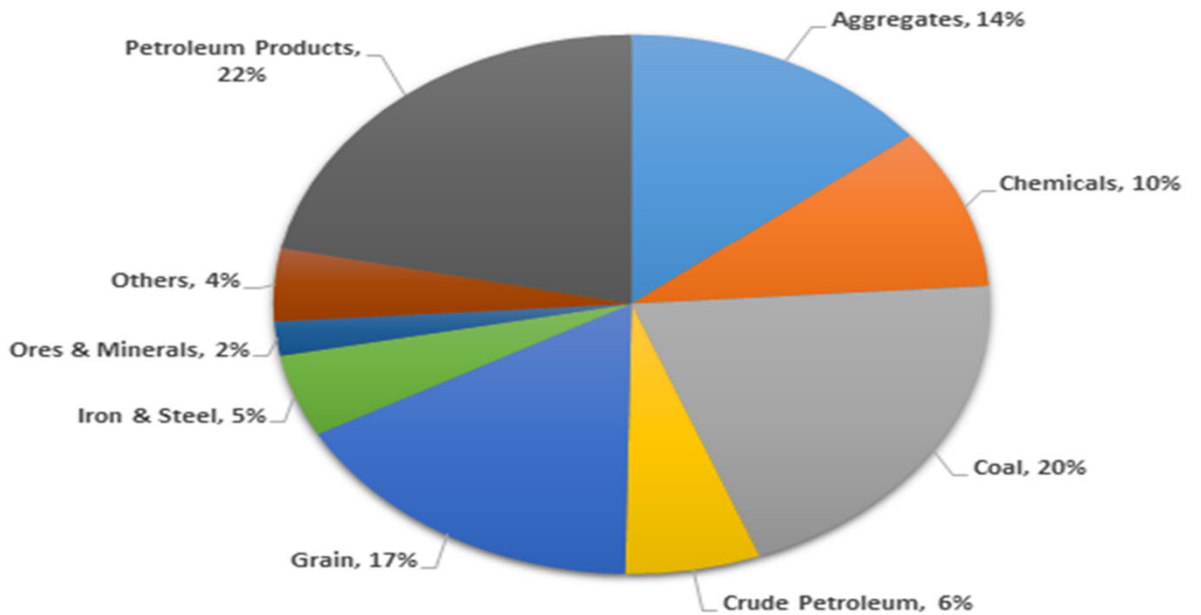
Unscheduled Closures: What Impact?



What's Moving on the Rivers?

534 : /#8 : ; 14 #
p lœrq#wrv#
ydxhg#dw# 553 #
e lœrq

2017 US Inland Waterways Commodities



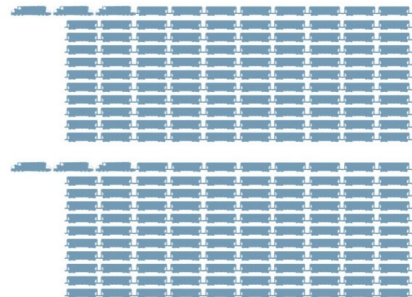
Advantages of Inland Waterways Transport:

One 15-Barge Tow Equals 216 Rail Cars or 1,050 Trucks

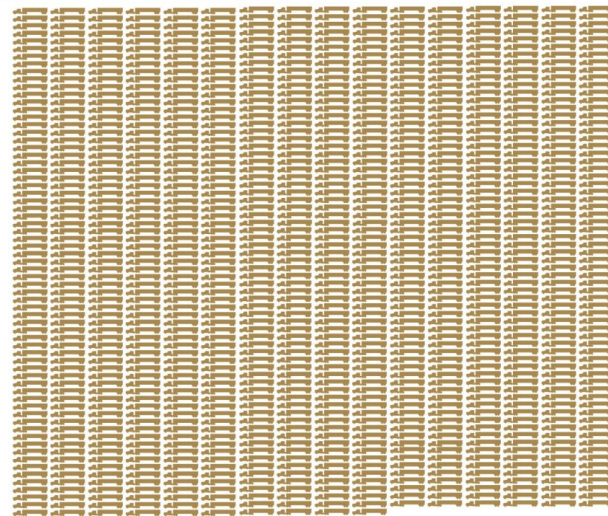
One 15-Barge Tow



216 Rail Cars + 6 Locomotives

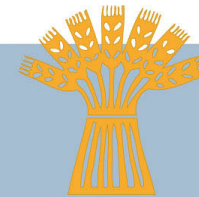


1,050 Large Semi Tractor-Trailers



Advantages of Inland Waterways Transport:

Easing Rail and Highway Congestion in Our Communities



One loaded covered hopper barge carries 58,333 bushels of wheat, enough to make almost 2.5 million loaves of bread.



2019: A Very Wet Year

- 2nd wettest year in the last 124 years
 - 212 levee breaches along the system
 - Baton Rouge: above flood stage for 242 consecutive days
 - 1st time in history Bonnet Carrie Spillway operated twice in same year
 - Mississippi River at Davenport, Iowa reached the highest level in 157 years.

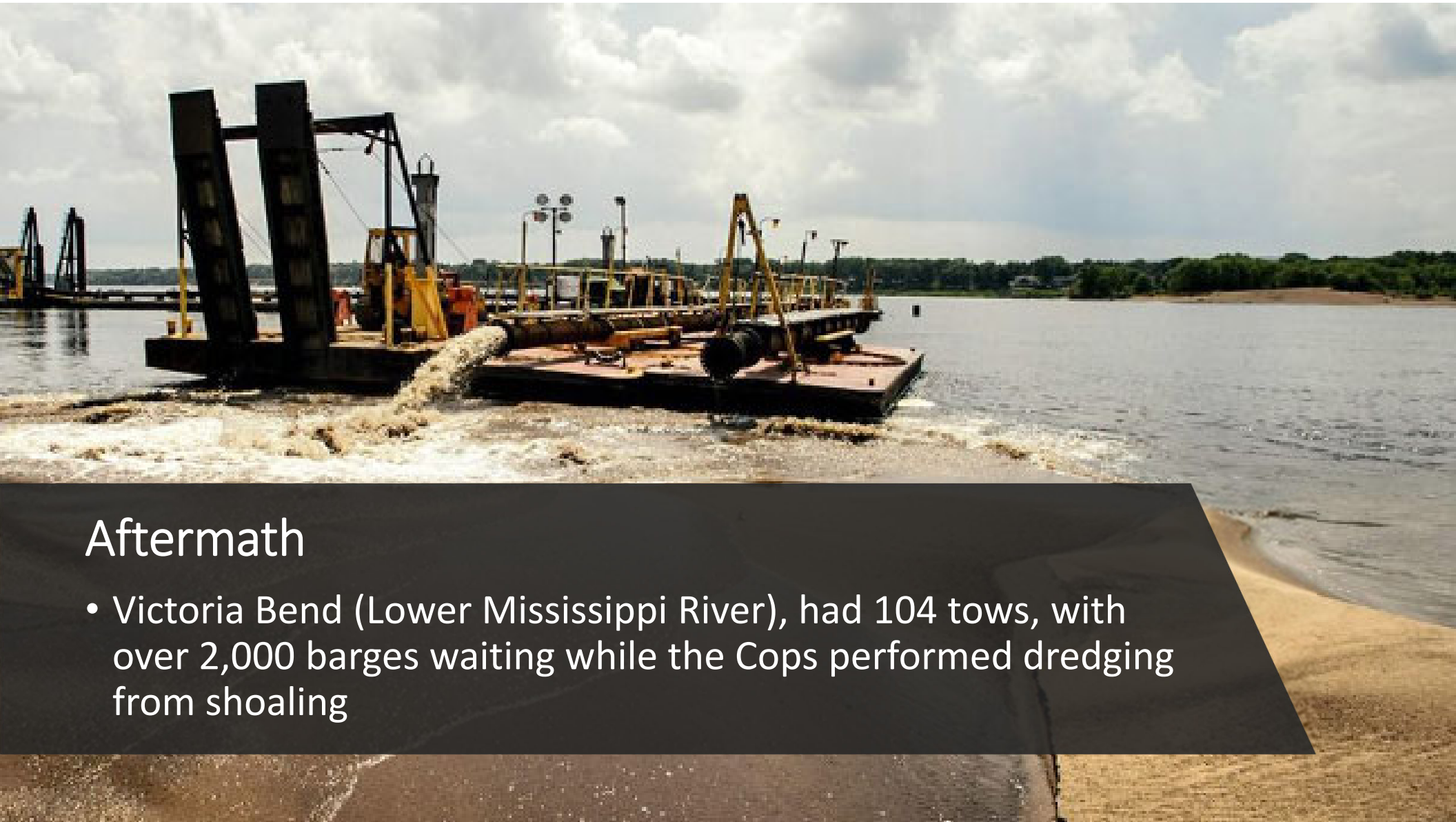


Davenport, Iowa Flooded



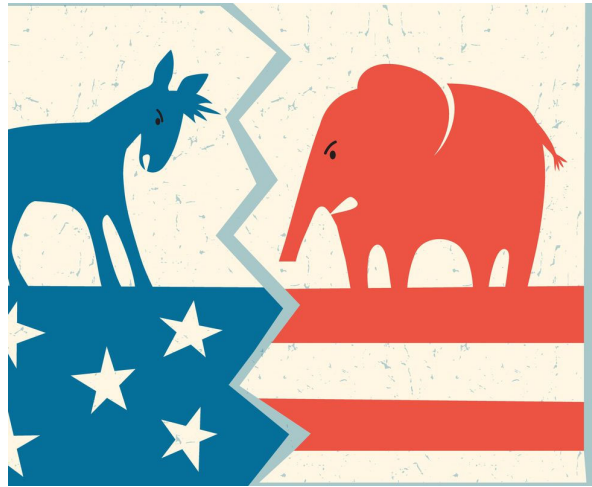
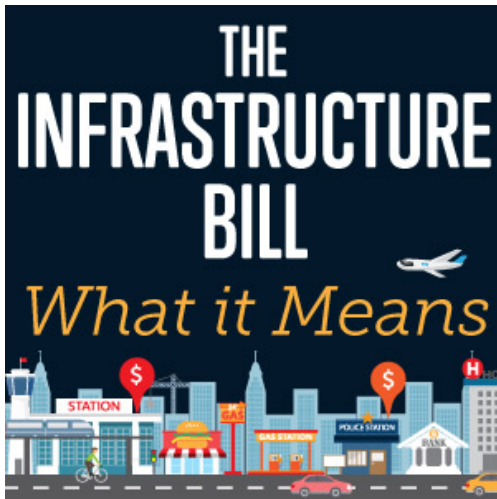
2019:Contiuned

- Saint Louis through Mel Price lock Closed 70 consecutive days
- Upper Mississippi: Mel Price lock north closed for 82 consecutive days
- MKARNS: System shutdown over 100 days. Traffic just started going to Port of Catoosa, smaller tows and only during daylight hours



Aftermath

- Victoria Bend (Lower Mississippi River), had 104 tows, with over 2,000 barges waiting while the Corps performed dredging from shoaling



WRDA

What's Ahead

Infrastructure Bill



©Steve Keley.

Water Resources Development Act

- Process has begun
 - **Senate** has held two hearings
 - Senate asked for Senators' Priorities
 - Senate mark-up early 2020
- **House** has held multiple hearings
- Will ask for Member priorities early next year
- Markup late spring



Highway Bill

- Highway bill expires September 30, 2020
 - Senate EPW Committee released draft text of bill
 - House Democrats expected to release text before Christmas
 - House Republicans to act shortly after



Illinois Waterway Closure 2020

- Consolidate full closures into the same year, rather than closing one or two locks each year
- Work at 6 sites concurrently, with 4 Locks requiring dewatering
- Onsite work to take place during a summer closure/restriction period
 - Mostly July through October to avoid historical spring flooding seasons and fall harvest seasons





2020 ILLINOIS WATERWAY SCHEDULED WORK


20



Browser address bar: <https://www.mvr.usace.army.mil/>

Navigation menu: About, Business With Us, Missions, Locations, Careers, Media, Library, Contact

Search: Search Rock Island D



New Rock Island District Lock Status Website

The Rock Island District maintains and operates a total of 20 lock sites on the Mississippi River and Illinois Waterway. Click the link below for updated information about the current operational status of each site and details of upcoming scheduled closures.

[Lock Status Website](#)

1 2 3 4 5 6

FACEBOOK

U.S. Army Corps of Engineers
8,133 likes

Like Page

Contact Us

News Releases

USACE identifies short-term natural disaster recovery activities 35 days ago

Army Corps of Engineers waives fees on National Public Lands Day, Sept. 28 42 days ago

RiverGages
River & Lake Water Levels

District Projects
Programs & Project Mgmt.

Customer Service
How can we help?

Navigation
River Charts ~ Lock Info

Public Notices
Civil Works ~ Regulatory ~ 408

Need a Permit?
Contact Regulatory

Recreation
Camp ~ Fish ~ Boat ~ Hike

Taskbar: Windows, Search, Edge, Chrome, Outlook, File Explorer, Word, PowerPoint, Excel, OneDrive, Adobe Reader, Internet Options, System Tray (Network, Volume, Date/Time: 2:44 PM 10/31/2019)



Questions?

- tzea@waterwayscouncil.org
- 202-765-2166
- Stay Connected:

Text **LOCKS** to **52886**