

Agricultural Retailers Association: Security Vulnerability Assessment Workshop



Asmark Security Vulnerability Assessment (ASVA)

- Web based model
- Ranks, weighs factors specific to a retail facility
- Allows the retailer to answer questions online
- Final report, with recommended countermeasures
- Utilization of layers of protection
 - Ways to improve site security in an incremental fashion
 - More informed decisions
 - Effective implementation

Agribusiness Security Working Group



The Fertilizer Institute



Agricultural
Retailers
Association



The Security Vulnerability Assessment (SVA) is sponsored by the Agricultural Retailers Association in cooperation with CropLife America and The Fertilizer Institute working together on behalf of industry as the Agribusiness Security Working Group.

Milestones

- Aug 2002 Development began
- Jan 2003 Development completed and announced
- Feb 2003 Received Association Institute for Chemical Engineering (AIChE) Center for Chemical Process Safety Certification



- Mar 2003 Asmark donated license to Agricultural Retailers Association
- Apr 2003 Began Promotions

Milestones

- July 2003 Number of SVA's reaches 1,000
- Sept 2003 Number of SVA's exceeds 2,000

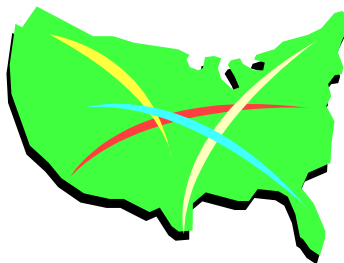


- State Associations 18 of 21
- National Retail Groups 8 of 9

Goal : To exceed 3,000 locations by December 2003

How It Works

- Retailers nationwide contact their State Association to register
- The State Association:
 - registers each location
 - assigns a login
 - forwards instructions
- Retailers logon to Agricultural Retailers Association's website to perform SVA and provide answers to 85 questions
- Retailers receive the final report upon submission

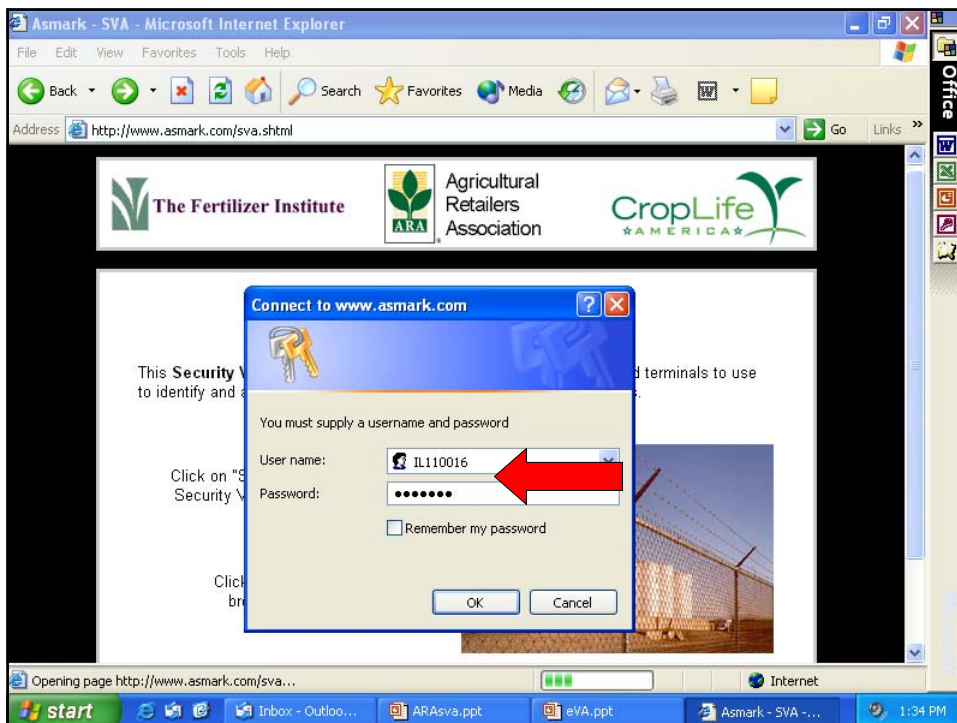


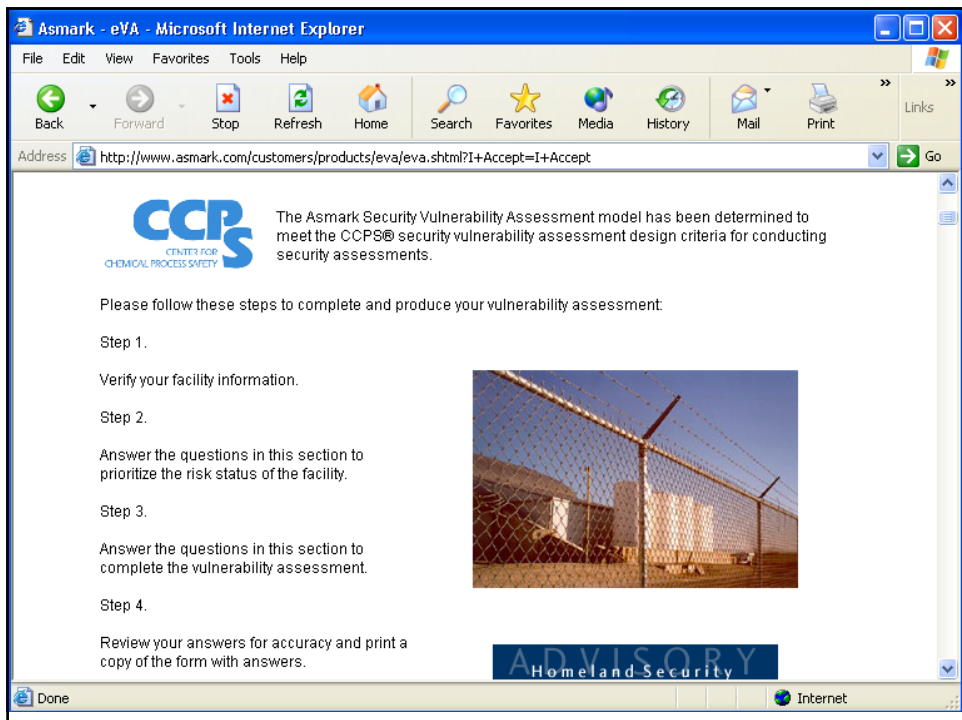
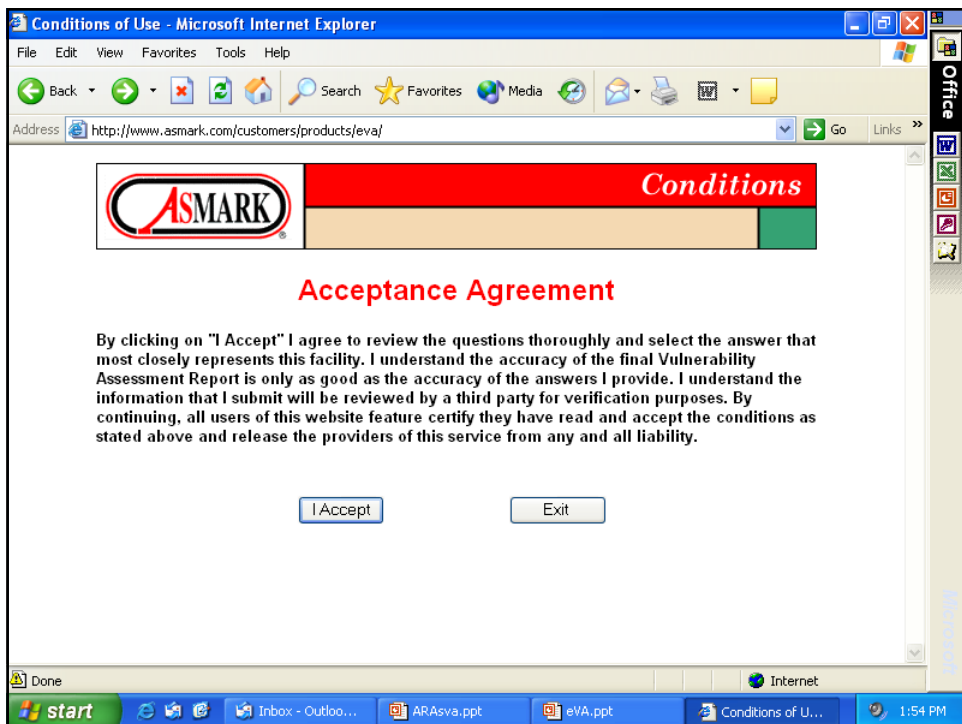


Registration of Sites

General guidelines

- Each physical location must register
- One original SVA report per site
- Login & password valid for one submission
- Price determined at time of registration
- States provide customer service





Understanding the Questions

- Read the entire question
- Read all choices for each answer
- Must understand the question
- Answer honestly
- Answer accurately



Asmark - eVA - Microsoft Internet Explorer

File Edit View Favorites Tools Help

Back Forward Stop Refresh Home Search Favorites Media History Mail Print Links

Address <http://www.asmark.com/customers/products/eva/eva.shtml?I+Accept=I+Accept> Go

Step 1. Verify Your Facility Information

Business Name	<input type="text" value="Sample Farm Supply"/>	
Unit Number	<input type="text" value="444"/>	
Physical Address	<input type="text" value="4941 Goetz Drive"/>	(ex. 123 Main Street)
Mailing Address	<input type="text" value="PO Box 32"/>	(ex. PO Box 99)
City	<input type="text" value="Owensboro"/>	
State	<input type="text" value="KY"/>	
Zip Code	<input type="text" value="42301"/>	
Facility Coordinator	<input type="text" value="John Doe"/>	
Office Phone Number	<input type="text" value="270-926-4567"/>	
Home Phone Number	<input type="text" value="270-926-4325"/>	

Internet

Asmark - eVA - Microsoft Internet Explorer

File Edit View Favorites Tools Help

Back Forward Stop Home Search Favorites Media Print Mail Wordpad

Address <http://www.asmark.com/customers/products/eva/eva.shtml?I+Accept=I+Accept> Go Links

Step 2. Prioritize the Risk Status of the Facility

Please review each of the following questions carefully and provide an answer. Please answer all questions that best describes this facility today.

1. For each of the following security-sensitive materials please enter the largest quantity stored on-site at this facility at any one time during the past year. (*# none, enter 0.*)

Ammonium nitrate	<input type="text"/>	pounds
Anhydrous ammonia	<input type="text"/>	pounds
Aqua ammonia	<input type="text"/>	gallons
Diesel fuel	<input type="text"/>	gallons
Gasoline	<input type="text"/>	gallons
Nitric Acid	<input type="text"/>	gallons
Propane (<i>LP Gas</i>)	<input type="text"/>	gallons
Urea	<input type="text"/>	pounds
Inhalation hazard pesticide(s)	<input type="text"/>	pounds
Class 1 Poison(s) (<i>Pesticide with "Danger-Poison" signal word on label.</i>)	<input type="radio"/> Yes <input type="radio"/> No	
Class 1-9 Hazardous Material(s) (<i>As defined by DOT, also appears on the shipping unit.</i>)	<input type="radio"/> Yes <input type="radio"/> No	

Done Internet

start e-mail Outlook ARAsva.ppt eVA.ppt Asmark - eVA - ... 1:53 PM

Asmark - eVA - Microsoft Internet Explorer

File Edit View Favorites Tools Help

Back Forward Stop Home Search Favorites Media Print Mail Wordpad

Address <http://www.asmark.com/customers/products/eva/eva.shtml?I+Accept=I+Accept> Go Links

17. Please provide answers to best describe the location where anhydrous ammonia is stored in stationary storage tanks at this facility. (*Please answer each question.*)

Are anhydrous ammonia stationary tanks located on-site?
(*# No, proceed to question 18*) ☐ Yes ☐ No

a. Are all tanks located within a fenced area? ☐ Yes ☐ No

b. Are all tanks equipped with valve locks? ☐ Yes ☐ No

c. Is an alarm system utilized? ☐ Yes ☐ No

d. Are security-related additives utilized? ☐ Yes ☐ No

18. Please provide answers to best describe the location where nurse wagons filled with anhydrous ammonia are stored at this facility. (*Please answer each question.*)

Are filled nurse wagons of ammonia stored on-site?
(*# No, proceed to question 19*) ☐ Yes ☐ No

a. Are all nurse wagons located within a fenced area? ☐ Yes ☐ No

b. Are all nurse wagons equipped with valve locks? ☐ Yes ☐ No

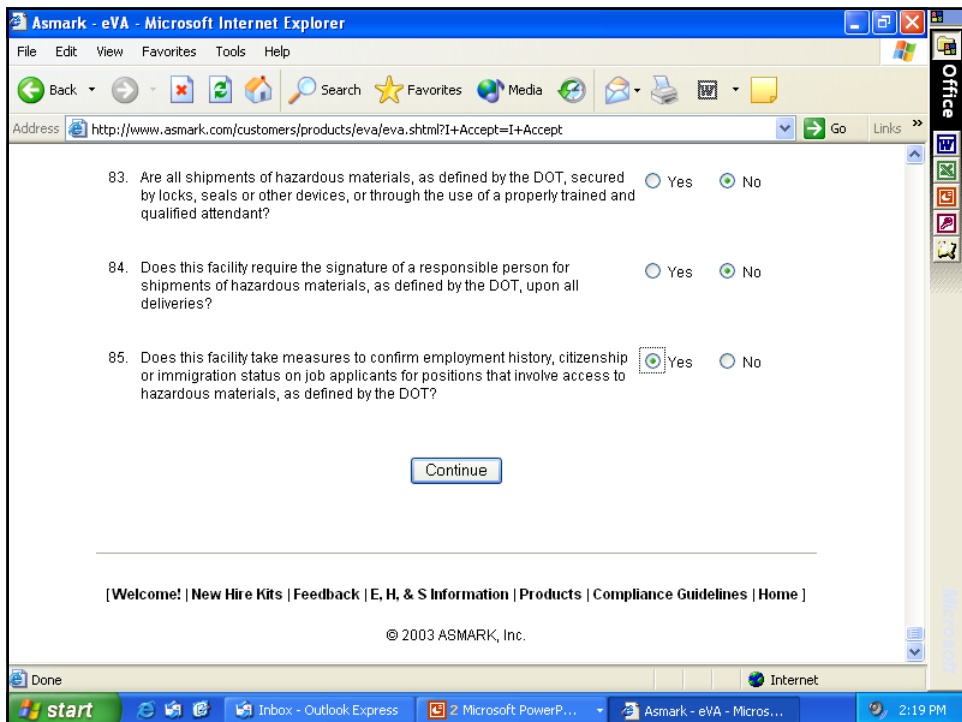
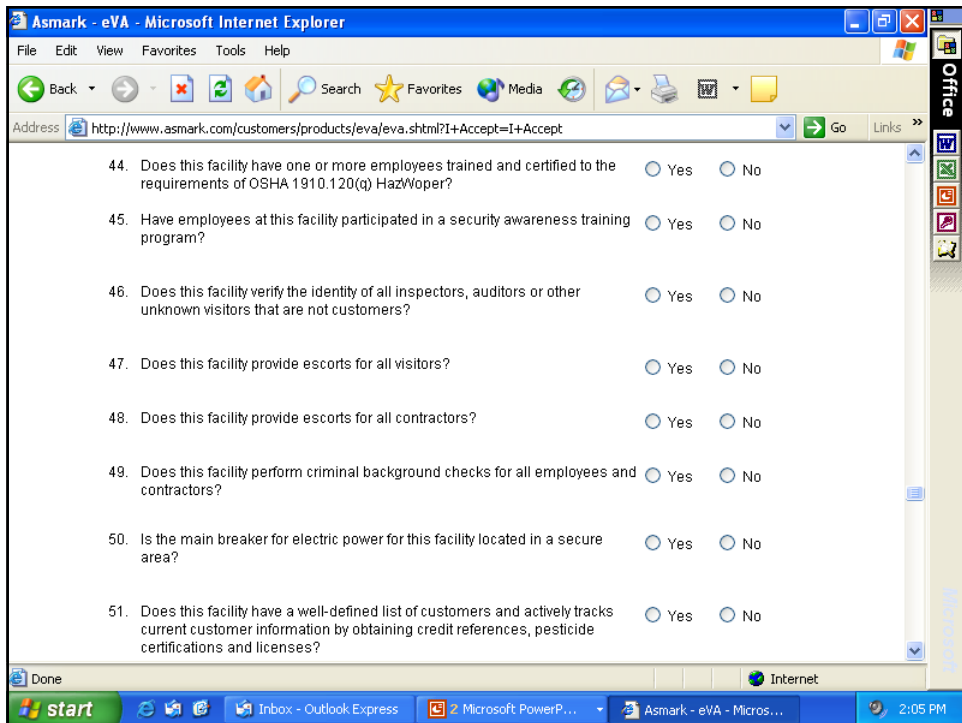
c. Are all nurse wagons equipped with tire locks? ☐ Yes ☐ No

d. Are all transfer hoses removed from tanks as an additional security measure? ☐ Yes ☐ No

e. Are security-related additives utilized? ☐ Yes ☐ No

Done Internet

start e-mail Outlook ARAsva.ppt eVA.ppt Asmark - eVA - ... 1:57 PM

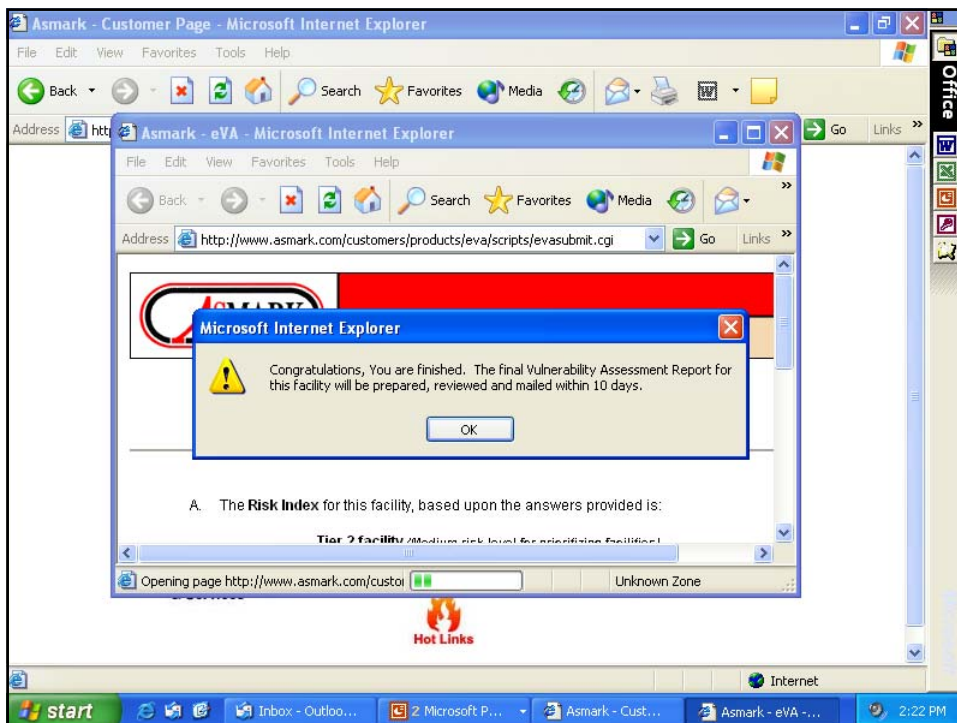


Department of Transportation Hazardous Material Transportation Regulations

The last 10 questions of the survey meet
the requirements of the DOT rule
published March 25, 2003.



U.S. Department of Transportation





Asmark - eVA - Microsoft Internet Explorer

File Edit View Favorites Tools Help

Back Forward Stop Home Search Favorites Media

Address <http://www.asmark.com/customers/products/eva/scripts/evasubmit.cgi> Go Links



eVA


Preliminary Security Vulnerability Assessment Report

5/24/2003

A. The **Risk Index** for this facility, based upon the answers provided is:

Tier 2 facility (Medium risk level for prioritizing facilities)

Requirement	Timeframe Tier 1	Timeframe Tier 2	Timeframe Tier 3	Timeframe Tier 4
Complete vulnerability assessment	12-31-02	6-30-03	12-31-03	12-31-03
Implement security enhancements	12-31-03	6-30-04	12-31-04	12-31-04
Verification by third party	3-31-04	9-30-04	3-31-05	Not Required

B. The **Vulnerability Index**, based upon the answers provided indicates this facility would be considered a:

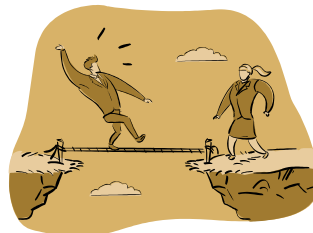
Medium risk facility

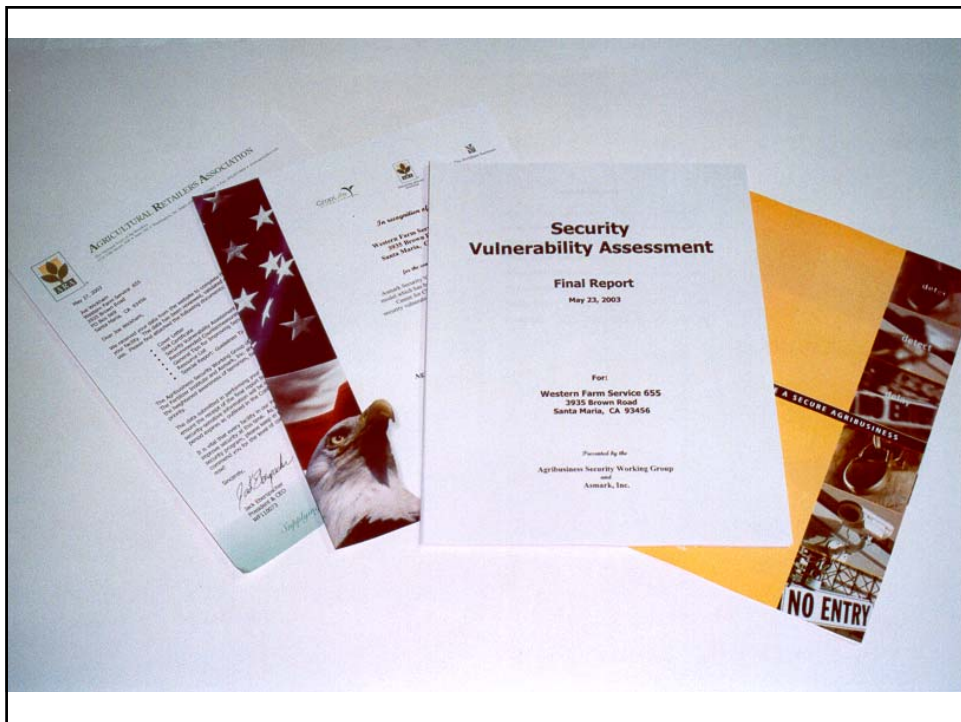
Done Internet

start e-mail Outlook Microsoft P... Asmark - Cust... Asmark - eVA - ... 2:24 PM

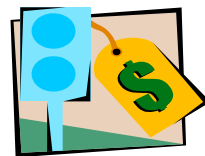
Risk

Tier 1	High	Score 13-16
Tier 2	Medium	Score 9-12
Tier 3	Low	Score 5-8
Tier 4	Slight	Score 0-4



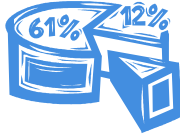


Establishing the Right Price



The price the member pays is determined when the registration is made by answering the membership questions. Example shown:

Price	Holds Current Membership with:
\$87.50	State Assoc. AND ARA,CLA or TFI
\$162.50	State Assoc. OR ARA,CLA or TFI
\$312.50	Not a member of any of the above



Statistics

Risk Index

- Slight 1%
- Low 36%
- Medium 61%
- High 2%

Helps in site
prioritization, products
handled, location & people
in area

Vulnerability Index

- Low 71%
- Medium 29%
- High 0%

Identifies and quantifies
security vulnerabilities

Inventory Percentages

- Ammonium Nitrate 37%
- Anhydrous Ammonia 48%
- Aqua Ammonia 10%
- Urea 63%
- Diesel Fuel 65%
- Gasoline 60%
- Nitric Acid 1%
- Propane 51%
- Inhalation Hazard Pesticides 38%
- Class 1 Poisons 80%
- Class 1-9 Hazardous Materials 91%

